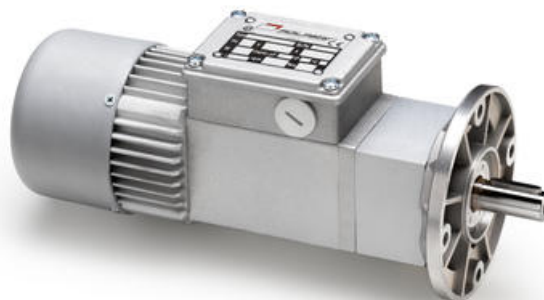


MINIMOTOR - ACE - COAXIAL GEAR MOTOR WITH FURTHER PLANETARY REDUCTION

ACE66B3-75
230V 1 ph 75rpm 2.9Nm B3 mount

- Single or three phase versions
- 10 to 74W delivered power
- Up to 23.5Nm rated torque
- B3 foot or B5 flange mounting
- IP65 as standard



PRODUCT DESCRIPTION

High quality, designed from the ground up to IP65 rated compact gear motor.

Physically smaller than the majority of similar powered gear motors due to the use of high quality components in precision manufacturing.

Ideally suited to many applications, including label and packaging machines, conveyors, pharmaceutical and medical machinery

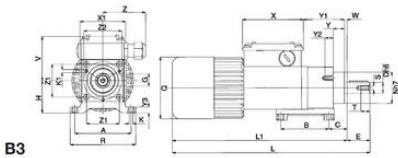
MOTOR: asynchronous single or three phase with 2 or 4 poles, totally enclosed with external ventilation. Thermal safety cutout on single phase model. Class F. IP65 protection according to CEI EN 60529.

GEAR UNIT: first stage with die-cast aluminium case, second stage in steel. Case-hardened and hardened gear pairs with shafts rotating on roller bearings. Lubrication with long life oil. Sealing rings made in special rubber for high temperatures. 15 gear ratios (i) available, from 37 to 2209.5. Rated torque 23.5 Nm. Version B3 or B5.

[Please click here for 2D and 3D drawings](#)

TECHNICAL DATA

Capacitor	2.5μF
Input voltage ac	230V
Nominal speed	75 rpm
Output power	27 W
Rated current	0.34A A
Rated torque	2.9Nm
Ratio	37:1



B3

Type	A	B	C	D	E	F	G	H	K	K1	L	L1	N	O	R	T	V	X	X1	Y	Y1	Y2	W	Z	Z1	Z2	Price Weight Growth Pulse kg	
ACE...	74	63	24	14	30	5	16	43	5.5	M4	256	226	41	81	86	M5	12	60	60	14,5	55	11	8	3,5	56	43	50	2,645
ACE-P	74	63	24	14	30	5	16	43	5.5	M4	271	241	41	81	86	M5	12	60	60	14,5	55	11	8	3,5	56	43	50	2,910
ACE-P2	74	63	24	14	30	5	16	43	5.5	M4	291	261	41	81	86	M5	12	60	60	14,5	55	11	8	3,5	56	43	50	3,320

AC product selection



Electric motors

15.06.2017



Servomotor

15.06.2017



Hydro generators

15.06.2017



Brushless servomotors

15.06.2017



Clean products

15.06.2017



Controls

15.06.2017

Please see product description above for 2D and 3D drawings